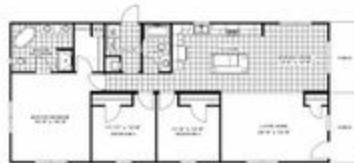




## THE MOUNTAIN VIEW



### THE MOUNTAIN VIEW

Model number:

**3 beds • 2 baths • 1584 sq.ft. • 28' width • 66' depth**

Our home building facilities invest in continuous product and process improvements. Plans, dimensions, features, materials, specifications and availability are subject to change without notice or obligation. Renderings and floor plans are representative likenesses of our homes and may differ from the actual homes. We invite you to tour a Home Center near you and inspect the highest value in quality housing available or call (919) 570-3366 to speak with a Home Consultant. Copyright 2017, CMH. All rights reserved.

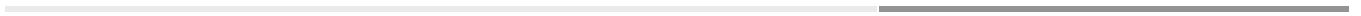
<https://www.claytonhomesofyoungsville.com>

### CLAYTON HOMES- YOUNGSVILLE

1582 US HWY 1  
YOUNGSVILLE, NC 27596

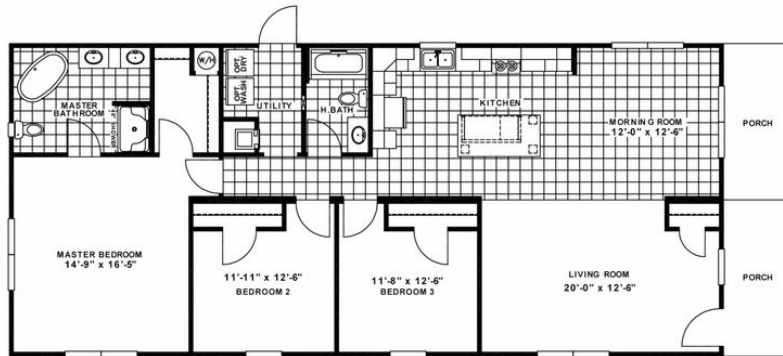
Monday - Thursday: By Appt. Only  
Friday: By Appt. Only  
Saturday: By Appt. Only  
Sunday: Closed

(919) 570-3366





## THE MOUNTAIN VIEW



### THE MOUNTAIN VIEW Model number:

**3 beds • 2 baths • 1584 sq.ft. • 28' width • 66' depth**

Our home building facilities invest in continuous product and process improvements. Plans, dimensions, features, materials, specifications and availability are subject to change without notice or obligation. Renderings and floor plans are representative likenesses of our homes and may differ from the actual homes. We invite you to tour a Home Center near you and inspect the highest value in quality housing available or call (919) 570-3366 to speak with a Home Consultant. Copyright 2017, CMH. All rights reserved.

<https://www.claytonhomesofyoungsville.com>

### CLAYTON HOMES- YOUNGSVILLE

1582 US HWY 1  
YOUNGSVILLE, NC 27596

Monday - Thursday: By Appt. Only  
Friday: By Appt. Only  
Saturday: By Appt. Only  
Sunday: Closed

(919) 570-3366