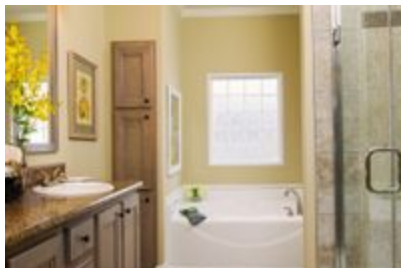




THE CHAPMAN



THE CHAPMAN Model number:

3 beds • 2 baths • 1791 sq.ft. • 28' width • 68' depth

Our home building facilities invest in continuous product and process improvements. Plans, dimensions, features, materials, specifications and availability are subject to change without notice or obligation. Renderings and floor plans are representative likenesses of our homes and may differ from the actual homes. We invite you to tour a Home Center near you and inspect the highest value in quality housing available or call (919) 570-3366 to speak with a Home Consultant. Copyright 2017, CMH. All rights reserved.

<https://www.claytonhomesofyoungsville.com>

CLAYTON HOMES- YOUNGVILLE

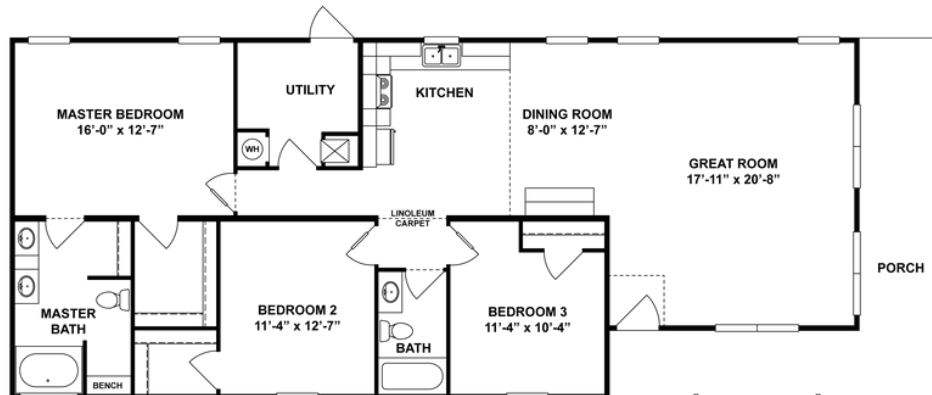
1582 US HWY 1
YOUNGVILLE, NC 27596

Monday - Thursday: By Appt. Only
Friday: By Appt. Only
Saturday: By Appt. Only
Sunday: Closed

(919) 570-3366



THE CHAPMAN



THE CHAPMAN Model number:

3 beds • 2 baths • 1791 sq.ft. • 28' width • 68' depth

Our home building facilities invest in continuous product and process improvements. Plans, dimensions, features, materials, specifications and availability are subject to change without notice or obligation. Renderings and floor plans are representative likenesses of our homes and may differ from the actual homes. We invite you to tour a Home Center near you and inspect the highest value in quality housing available or call (919) 570-3366 to speak with a Home Consultant. Copyright 2017, CMH. All rights reserved.

<https://www.claytonhomesofyoungsville.com>

CLAYTON HOMES- YOUNGSVILLE

1582 US HWY 1
YOUNGSVILLE, NC 27596

Monday - Thursday: By Appt. Only
Friday: By Appt. Only
Saturday: By Appt. Only
Sunday: Closed

(919) 570-3366